



WARNING! Do not install, wire, maintain, or inspect the pilot light while the power supply is turned on. Failure to comply could result in electric shock or fire hazard.

CAUTION! Do not modify the pilot light. Failure to comply could result in damage to the pilot light and will void the warranty. Magnetek is not responsible for any modification of the product made by the user.

Please inspect the delivered product to ensure that it is correct. This instruction sheet should be used for the contacts referenced in the specifications.

Specifications	Pilot Light Model			
	PLH-120R	PLH-120G	PLH-120Y	PLH-120T
Voltage Rating	120VAC 50/60Hz 2W	120VAC 50/60Hz 1W	120VAC 50/60Hz 2W	120VAC 50/60Hz 2W
Applicable Standard	UL508; CSA C22.2 No. 14			
Ambient Temperature	32°F to 104°F (0°C to 40°C)			
Applicable Wire Sizing	18 – 16 AWG			
Enclosure	NEMA 4/4X (exposed surface only when installed as intended)			

The following mark is indicated on the pilot light.



Figure 1: UL Recognized Component Mark

Installing the Pilot Light



Figure 2: Pilot Light

1. DO NOT use any enclosures other than Magnetek SBN/SBI/SBIC/SBIT series enclosures (or equivalent).
2. DO NOT use any metallic enclosures.

CAUTION! Using an inappropriate enclosure or metallic enclosure may create an electric shock and/or fire hazard.

3. For Pilot Light Model PLH-120:
 - a. Use on the flat surface of a NEMA Type 4/4X enclosure.
 - b. Confirm that the gasket (o-ring) of the pilot light is installed correctly.
 - c. The enclosure hole dimension should be 13.5mm dia. \pm 0.1mm.
4. Tightening Torque
 - a. Install the spring washer and hexagon nut (M14) to a tightening torque of 3 – 3.5 kgf.cm (0.29 – 0.34 N.m).
 - b. Spring washers and hexagon nuts (M14) are available for the standard accessory.

Wiring

NOTE: Only qualified personnel should install the wiring.

1. Use UL listed/CSA approved cable during installation: 18 – 16 AWG (0.81 – 1.32 mm²), max temperature rating < 60°C.
2. Use copper conductor only.
3. Once the pilot light is wired, the following insulated close-end connector is recommended (see other side):

Cat. No. 0191600012

From Molex, Inc.

Wire Range: 18 – 16 AWG Cu stranded
 Number of Wires: 2 – 3; 4 – 8
 Wire Strip Length: 9 – 11 (23/64 – 7/16); 10 – 12 (13/32 – 15/32)

NOTE: Use the corresponding crimping tool, such as model WH4791-ND from Molex, Inc., or equivalent.



4. Do NOT solder the wires, and do not connect bare wires direct for wire connections.

Operation

1. If the crane/hoist moves in a different direction regardless of the controls from the pushbutton station, stop operation immediately. If the pushbutton station is malfunctioning, the operator may be injured.
2. Do not expose the pushbutton station to excessive shocks and vibrations. Otherwise, the pilot light may become deformed or damaged, causing malfunctions or operation errors.

Wiring Diagrams

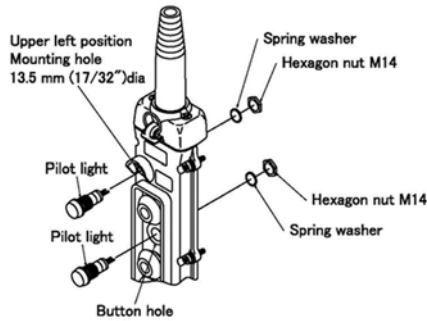


Figure 3: Pilot Light Placement(s) and Installation

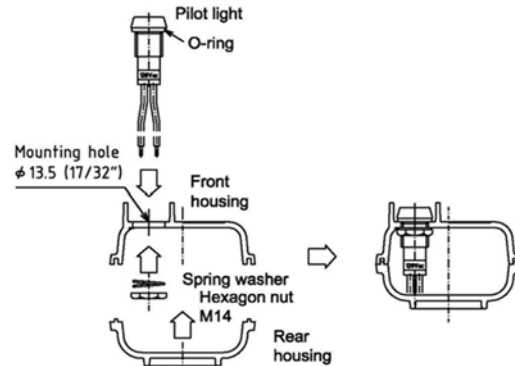


Figure 4: Cross-section view of Upper Left Position Mounting Hole Installation

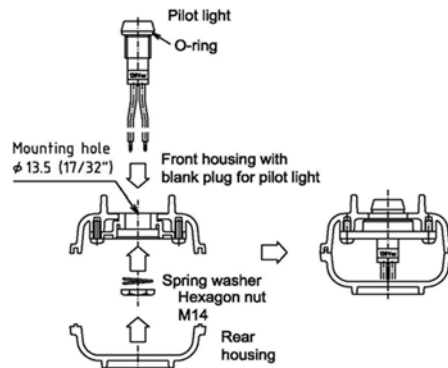


Figure 5: Cross-section view of Pilot Light Installation near Pushbuttons